

RECEIVED  
LARAMIE COUNTY  
CHEYENNE, WY.

'86 OCT 14 AM 11:51

CERTIFIED LAND CORNER RECORDATION

DESCRIPTION OF CORNER EVIDENCE FOUND, AND ORIGINAL RECORD (if known)

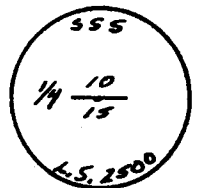
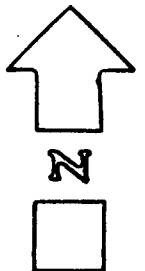
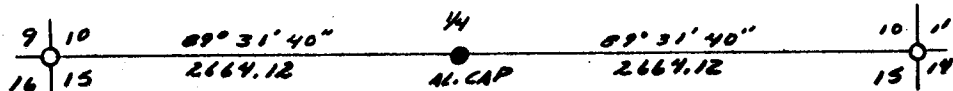
T 15 N  
10  
1/4 ———  
15  
R. 67 W.

SET: 1/2" X 1/8" REBAR WITH ALUMINUM CAP, PROJECTING 0.2 FEET ABOVE GROUND STAMPED AS SHOWN BELOW. MONUMENT LIES ON NORTH EDGE OF OLD ROAD BED

DESCRIPTION OF MONUMENT AND ACCESSORIES ESTABLISHED TO PERPETUATE THE ORIGINAL LOCATION OF THIS CORNER:

SEE TIES BELOW

SKETCH, WITH COURSE AND DISTANCE TO ADJACENT CORNER IF DETERMINED IN THIS SURVEY. (May Sketch or Paste Reproduction on Reverse Side.)



I, TOM A. STEIL certify that I have carefully performed or reviewed the work done on the diagrammed corner as reported on this recordation form and approve the same.

*Tom A. Steil*  
Signature of Surveyor

L.S. 2500  
Registration No.

STATE OF WYOMING,

Office of Clerk and Recorder,

County of Laramie

This "corner record" was filed for record on the 14 day of Oct, 1986, was noted on the cross-index plat and is assigned page No. \_\_\_\_\_, in book No. \_\_\_\_\_

*Joseph C. Whitcomb*  
 Cross Index No. J-15 T, 15 R. 67 Mer.  
 \_\_\_\_\_ T. \_\_\_\_\_ R. \_\_\_\_\_ Mer.  
 \_\_\_\_\_ T. \_\_\_\_\_ R. \_\_\_\_\_ Mer.  
 \_\_\_\_\_ T. \_\_\_\_\_ R. \_\_\_\_\_ Mer.  
 \_\_\_\_\_ T. \_\_\_\_\_ R. \_\_\_\_\_ Mer.  
 \_\_\_\_\_ T. \_\_\_\_\_ R. \_\_\_\_\_ Mer.  
 \_\_\_\_\_ T. \_\_\_\_\_ R. \_\_\_\_\_ Mer.